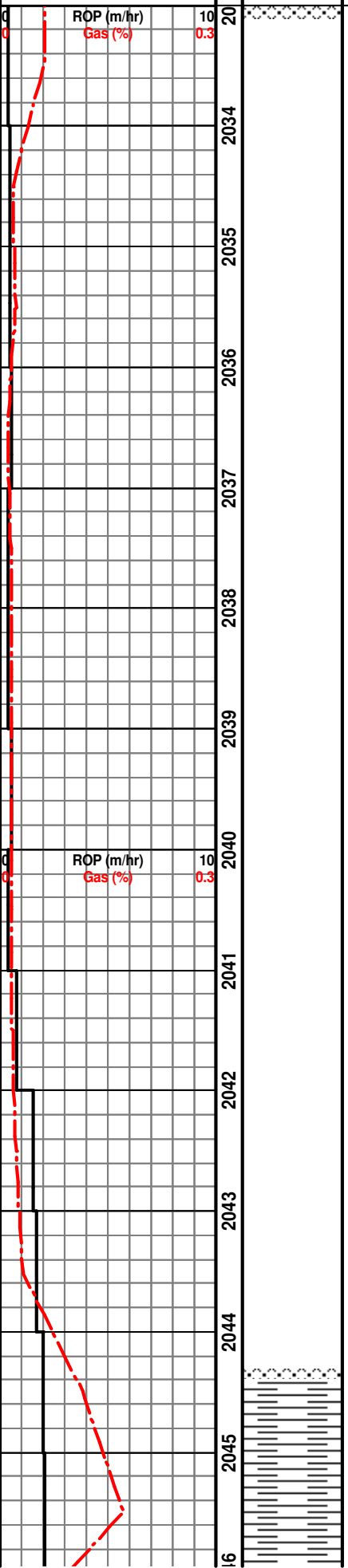


**Curve Track 1**  
 ROP (m/hr) ———  
 Gas (%) - - - - -

Depth  
 Lithology  
 Oil Shows

**Geological Descriptions**



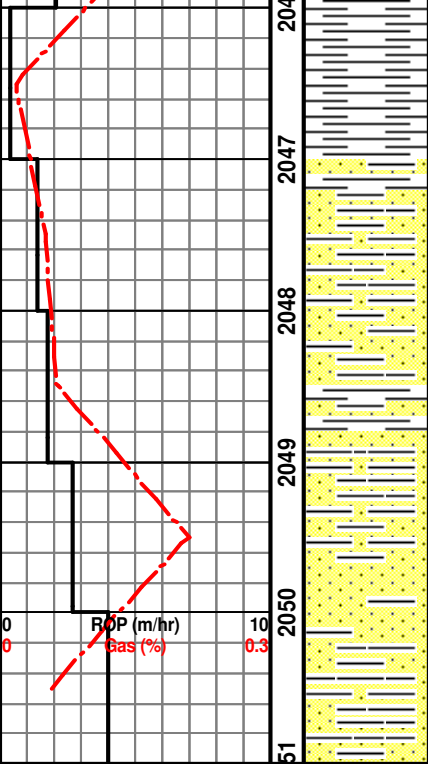
CORE No.5 Cut 2033.0-2051.0m (18.0m), Recovered 2044.41-2051.00m (6.59m) 37%.

NOTE: Core is marked from bottom up. Missing sections of core are from the top, from the bottom, and at 3.95m up from bottom (ie. at marked depth of 2047.05m). This core will require gamma correlation to accurately determine the depths of the recovered core sections.

\*2033.00-2044.41m No Recovery

NOTE: Core is marked from bottom up. Missing sections of core are from the top, from the bottom, and at 3.95m up from bottom (ie. at marked depth of 2047.05m). This core will require gamma correlation to accurately determine the depths of the recovered core sections.

\*2044.41-2047.05m CLAYSTONE: dark brown grey, very silty, trace very fine quartz and altered feldspar sand grains in part, trace glauconite, trace micromica, moderately hard, slightly subfissile.



\*2047.05m CLAYSTONE: dark brown grey, very silty, common dispersed very fine to occasionally very coarse quartz sand grains, common very fine to fine off white altered feldspar grains, trace glauconite, trace micromica, moderately hard, slightly subfissile.

\*2047.73m SANDSTONE: medium to dark brown grey, very fine to fine, occasional medium to very coarse grains, subangular to subrounded, very poorly sorted, weak silica cement, abundant medium to dark brown grey argillaceous and silt matrix - matrix supported, clear to opaque quartz grains, common altered feldspar grains, trace glauconite, friable, very poor visual porosity, no oil fluorescence.

\*2048.84m CLAYSTONE: medium to dark brown grey, very silty, abundant dispersed very fine to fine quartz and glauconite grains, trace micromica, moderately hard, slightly subfissile.

\*2049.80m SANDSTONE: light brown grey, very fine to very coarse, dominantly medium, subangular to subrounded, very poorly sorted, weak silica cement, abundant off white argillaceous matrix in part, abundant medium brown argillaceous and silt matrix in part, clear to opaque quartz grains, trace glauconite, friable, poor visual porosity, no oil fluorescence.

\*2050.80m SANDSTONE: medium brown, very fine to fine, occasional medium to very coarse grains, subangular to subrounded, very poorly sorted, weak silica and calcareous cements, abundant medium brown argillaceous and silt matrix, clear to opaque quartz grains, trace glauconite, friable to hard, very poor visual porosity, no oil fluorescence.

\*2051.00 SANDY CLAYSTONE: medium brown grey, very silty, common dispersed very fine to coarse quartz sand grains, slightly calcareous and dolomitic, trace calcite veining, trace micromica, hard, slightly subfissile.